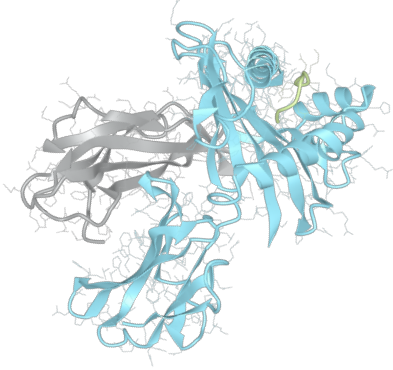


# Product datasheet



## sHLA-C\*07:04

Cw\*07:04, Cw\*0704, C\*0704, C0704  
Cw0704, C\*07, C07, Cw\*07, Cw07, Cw7

<b>Serological Name</b>	Cw7
<b>Peptide Load</b>	Endogenous
<b>Modification</b>	Unmodified
<b>Conjugation</b>	Unconjugated
<b>SKU</b>	C0704

### Product Description

<b>Allele Name</b>	C*07:04 B2m
<b>HLA Class</b>	HLA Class I
<b>HLA Gene Locus</b>	HLA-C
<b>Alternative Allele Name A Chain</b>	Cw*07:04, Cw*0704, C*0704, C0704, Cw0704, C*07, C07, Cw*07, Cw07, Cw7
<b>Alternative Allele Name B Chain</b>	-
<b>Description</b>	Recombinant, truncated Class I soluble Human Leukocyte Antigen (sHLA), naturally folded and glycosylated, loaded with endogenous peptides.
<b>Serological Name</b>	Cw7
<b>Serological Split</b>	-
<b>Bw4/Bw6 Assignment</b>	Bw6
<b>Bw4/Bw6 Sequence</b>	SLRNLRG
<b>Allele Frequency [World Population]</b>	
<b>A chain</b>	1.5%
<b>B chain</b>	-

### Associated products

[C0704bio](#)  
[C0704pe](#)

## Product Specification

<b>Product name</b>	HLA-C*07:04
<b>HLA Species</b>	Human
<b>Host Cell Line Species</b>	Human
<b>Clone Designation</b>	C7G4
<b>Tail Specification</b>	VLDL
<b>Peptide Load</b>	Endogenous
<b>Modification</b>	Unmodified
<b>Conjugation</b>	Unconjugated
<b>Complexity</b>	Monomer
<b>Protein Format</b>	Recombinant, truncated, soluble, non-modified, non-labeled, endogenously loaded
<b>Storage Temperature</b>	4 °C (This product should be stored undiluted)
<b>Form</b>	Liquid
<b>Concentration</b>	1000.0 µg/ml
<b>Formulation</b>	PBS/0.02% Sodium Azide
<b>pH</b>	7.4
<b>Purification Method</b>	Affinity Chromatography
<b>Grade</b>	Research Use Only [RUO]
<b>Authentication Verification</b>	Sequence Based Typing

## Protein Sequences

<b>Alpha Chain Sequence</b>	CSHSMRYFDT AVSRPGRGEP RFIISVGYVDD TQFVRFDSDA ASPRGEPRAP WVEQEGPEYW DRETQKYKRQ AQADRVSLRN LRGYYNQSED GSHTFQRMYG CDLGPDGRLR RGYDQFAYDG KDYIALNEDL RSWTAADTAA QITQRKLEAA RAAEQDRAYL EGTTCVEWLR R YLENGKKTLLQ RAEPPKTHVT HHPLSDHEAT LRCWALGFYP AEITLTWQRD GEDQTQDTEL VETRPAGDGT FQKWAAVVVP SGQEQRYTCH MQHEGLQEPL TLSSVVSTDD DLA
<b>Beta Chain Sequence</b>	IQRTPKIQVY SRHPAENGKS NFLNCYVSGF HPSDIEVDLL KNGERIEKVE HSDLSFSKDW SFYLLYYTEF TPTEKDEYAC RVNHVTLSPQ KIVKWDRDM

## Related Products

C0701  
C0702  
A0201  
B0702

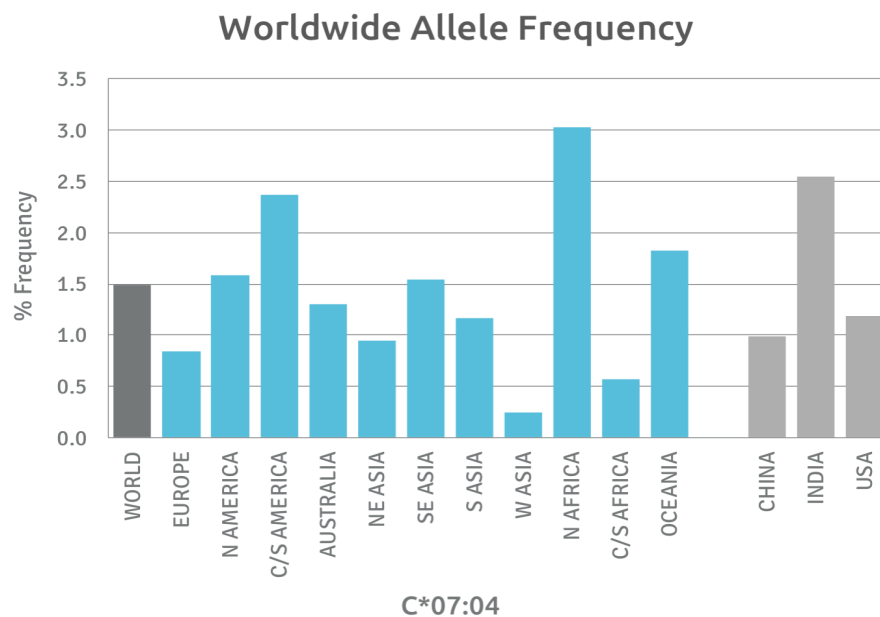
## Applications

HLA Sandwich ELISAs  
HLA Direct ELISAs  
HLA-Sera Antibody Assays  
HLA Controls in ELISA Assays  
HLA Assay Standards  
HLA Blocking Assays  
HLA Neutralizing Assays  
HLA Competition Assays  
HLA Bead Assays  
HLA Immunization Procedures

## Recommended Antibodies

W6/32  
Anti-B2m

## Allele Frequency



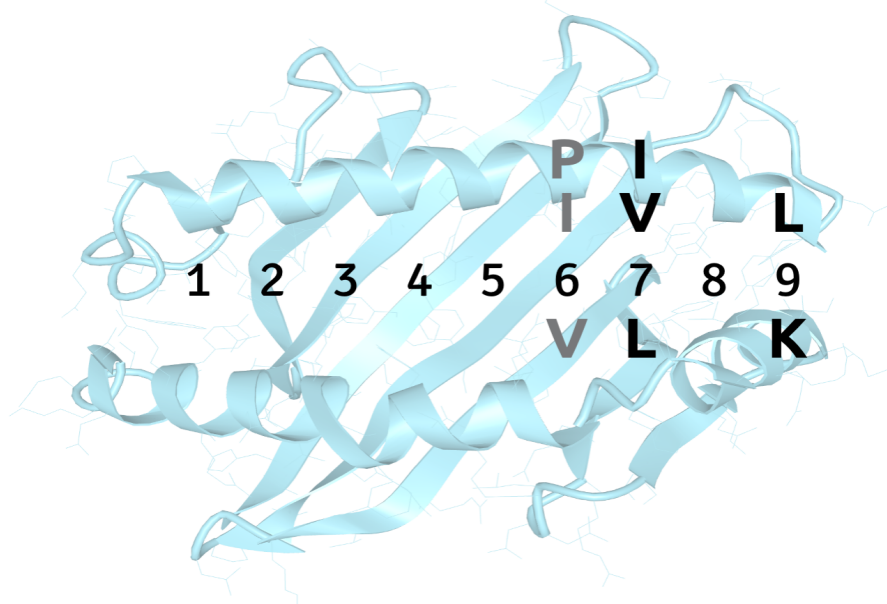
Please note:  
ALL PRODUCTS ARE FOR RESEARCH USE ONLY. NOT FOR COMMERCIAL USE IN DIAGNOSTIC PROCEDURES.  
For more information, please visit our Policies section on our website. For licensing inquiries, please contact

[licensing@hlaprotein.com](mailto:licensing@hlaprotein.com)

 HLA Protein  
PURE PROTEIN, LLC

## Motif

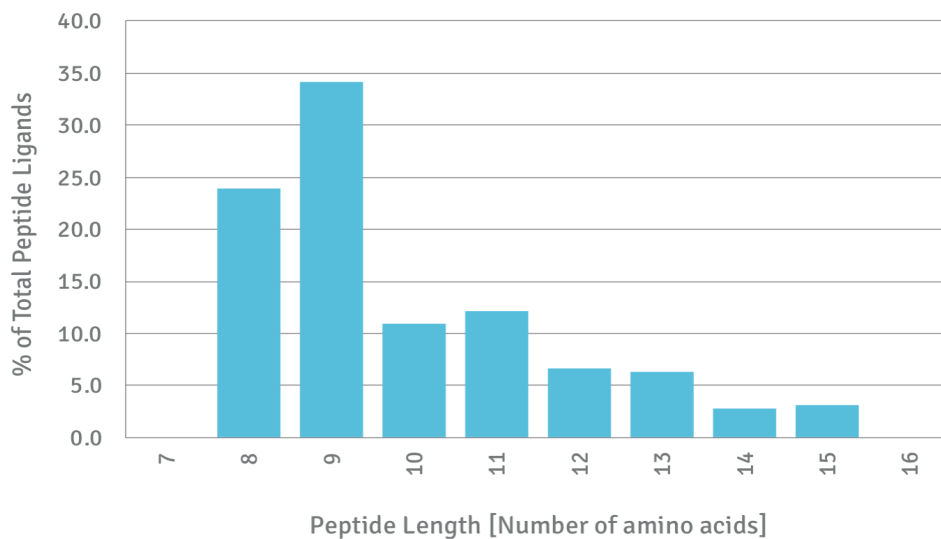
### C\*07:04 BINDING MOTIF



## Length Distribution

### HLA Length Distribution

**C\*07:04**



Please note:

ALL PRODUCTS ARE FOR RESEARCH USE ONLY. NOT FOR COMMERCIAL USE IN DIAGNOSTIC PROCEDURES.

For more information, please visit our Policies section on our website. For licensing inquiries, please contact

[licensing@hlaprotein.com](mailto:licensing@hlaprotein.com)

